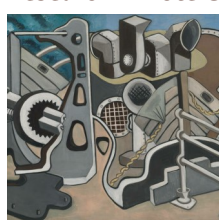
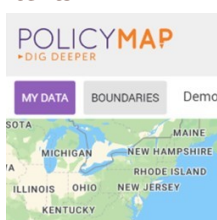


Research Minute Contents:



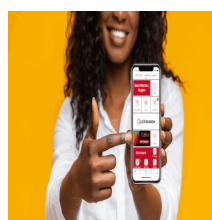
LEC Lobby Displays



Database Spotlight

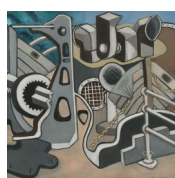


List for Faculty



Library Mobile App

Labor Education Center Lobby Displays



The next time you are in the Labor Education Center, take some time to view the two Lobby Displays in the front of the building. Focusing on labor and art, the pieces selected represent different perspectives of labor and work. The original pieces displayed were created on multiple mediums including photographs, postcards, paintings, cartoons and stickers. Themes cover strikes, the Great Depression, the division between capital and labor, social activism, race, and unions.

Pictured here is I. Rice Pereira's *Boat Composite*, a 1932 oil on linen depicting connections between machines and labor. It is currently housed at the Whitney Museum of American Art in New York.

Database Spotlight: Policy Map



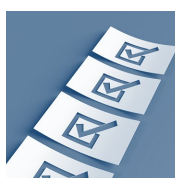
As stated on the RUL website, PolicyMap is an online data and mapping application that provides access to over 10,000 indicators related to demographics, housing, income, crime, mortgages, health, jobs, and more. Data is available at many common geographic entities (address, block group, census tract, zip code, county, city, state, metro area) as well as unique geographies such as school districts and political boundaries. Data is accessible in interactive maps, tables, charts, and reports and also may be downloaded.

Relevant indicators include: Mode of Transportation to Work, Job and Worker Accessibility, Small Business Development Centers, Economic Diversity, Jobs per Household, Workers per Job, Employment Density, Jobs by Industry and Sector, Jobs and Wages by Industry, Employment, Unemployment and the Labor Force.

The database can be accessed here:

<https://www.libraries.rutgers.edu/databases/policymap>

List of Faculty Services & Resources



✓ Information Literacy Sessions:

Classes can be in-person or online (synchronous or asynchronous). A session does not need to accompany a formal research assignment. Information literacy skills are used on a daily basis whenever looking for and/or using information. Suggested topics include proper citation methods, avoiding plagiarism, identifying credible and/or scholarly sources, search strategies, and overviews of the resources available.

✓ Embedded Librarian in Canvas:

Do you have the need for an embedded librarian? Do your students have any assignment that has them looking for information? Invite me into your course in order to communicate directly with your students if they have any questions about the resources available to them. This will also enable me to share any videos or other learning resources.

✓ Popular Electronic Resources:

New York Times: <https://www.libraries.rutgers.edu/indexes/nyt-digital>

Wall Street Journal: <https://www.libraries.rutgers.edu/indexes/wsj-current>

Chronicle of Higher Education: <https://www-chronicle-com.proxy.libraries.rutgers.edu/>

✓ RUL Workshops:

The New Brunswick Libraries Fall 2022 workshop schedule is now available at: <https://libcal.rutgers.edu/nblworkshops>

These open workshops provide an introduction to research tools and methods such as Python, R, Digital Humanities, NVivo, data visualization, data science topics from Tableau to Machine Learning, and topics relating to diversity issues in data such as algorithmic bias. Workshops are open to all members of the Rutgers community. The workshop calendar will be updated as new workshops are added throughout the semester.

✓ Useful Links:

Reading Lists and Reserves: <https://www.libraries.rutgers.edu/teaching-support/reading-lists-and-reserves>

Open and Affordable Textbook Program: <https://www.libraries.rutgers.edu/teaching-support/open-and-affordable-textbooks-program>

Open Access Scholarship: <https://www.libraries.rutgers.edu/research-tools-and-services/open-access-scholarship>

Research Impact and ORCID: <https://www.libraries.rutgers.edu/research-tools-and-services/research-impact>

Library Mobile App



The Rutgers University Libraries launched their new mobile app this month. Users are offered an "enhanced digital library experience with quick access to library hours, course reading lists, room reservations, research assistance, and more." (RUL Homepage) The app allows for easy access to search for materials in the catalog using QuickSearch, the opportunity to Chat with a Librarian, and to log into your library account to check what you have out and see when items need to be returned. Visit the page below to download the app today:

<https://www.libraries.rutgers.edu/app>

SHARE YOUR RESEARCH WITH COLLEAGUES

Don't forget *The Carey Library Research Minute* would still love to share the research being conducted by faculty and students in order to foster collaboration, inclusion, and collegiality. If you would like to share what you are currently working on, please pass it along. The next issue will be published in November 2022.

James B. Carey Library
smlr.rutgers.edu/about-smlr/carey-library
 848-932-9513